

Patterns in the Court:

Mapping the mid-C17th
Thames shoreline

Colin Greenstreet
Co-director
MarineLives Project

December 3rd, 2016



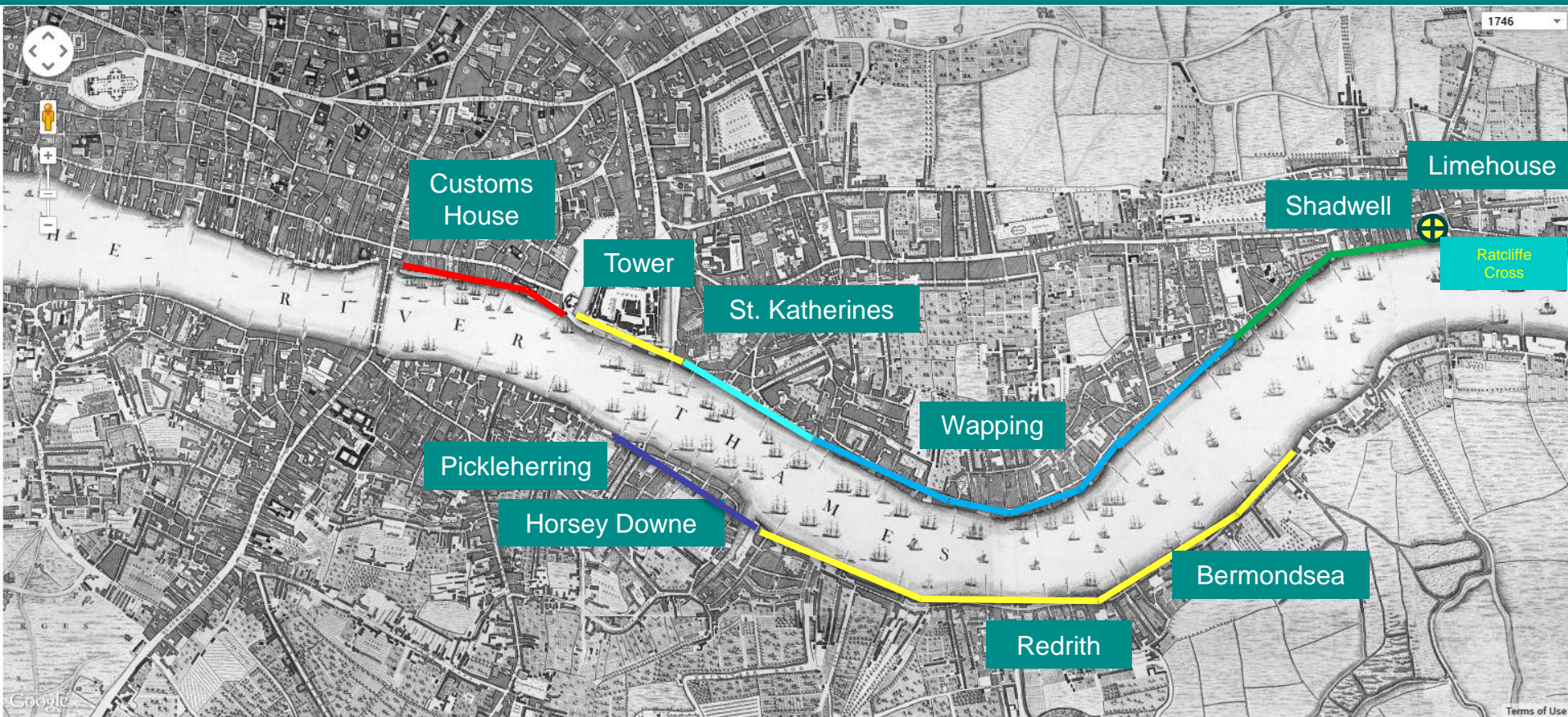
Spatial experiment

Goal: Use 1650s HCA data to build a river-centric analysis of commercial life in London & surrounds, combining topographical, occupational and event/movements data



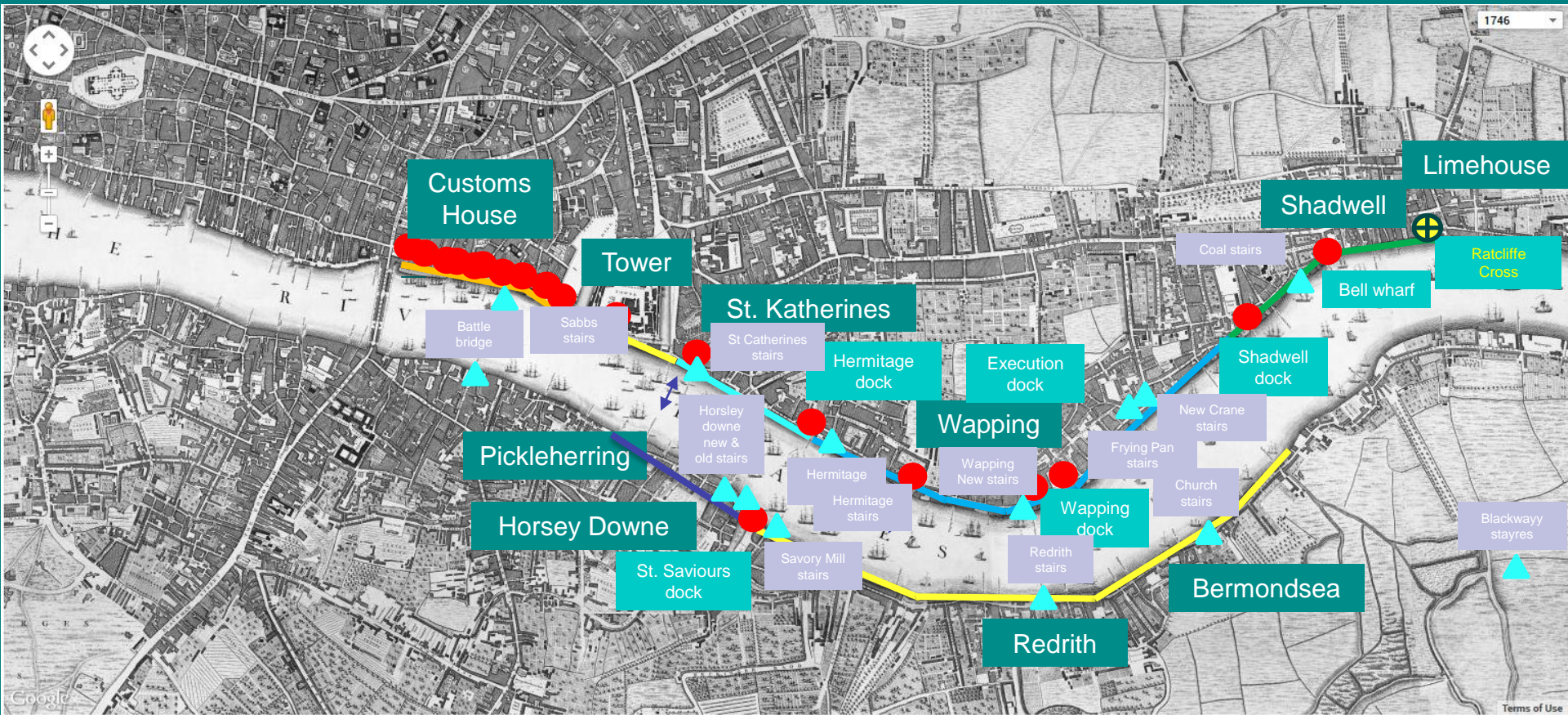
London Bridge to Limehouse

COMMERCIAL RIVER



London Bridge to Limehouse

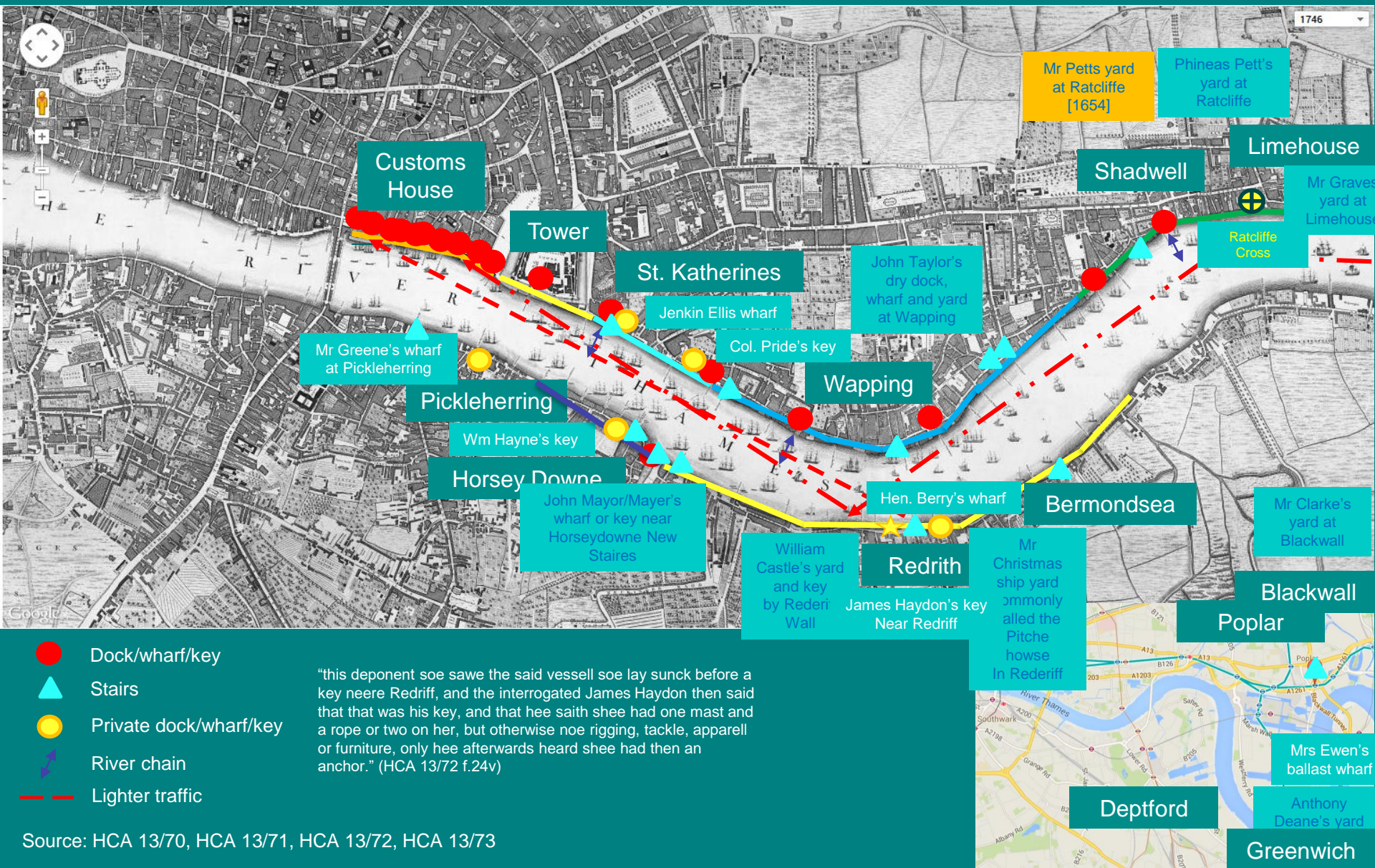
COMMERCIAL RIVER



- Dock/wharf/key
- ▲ Stairs
- River chain

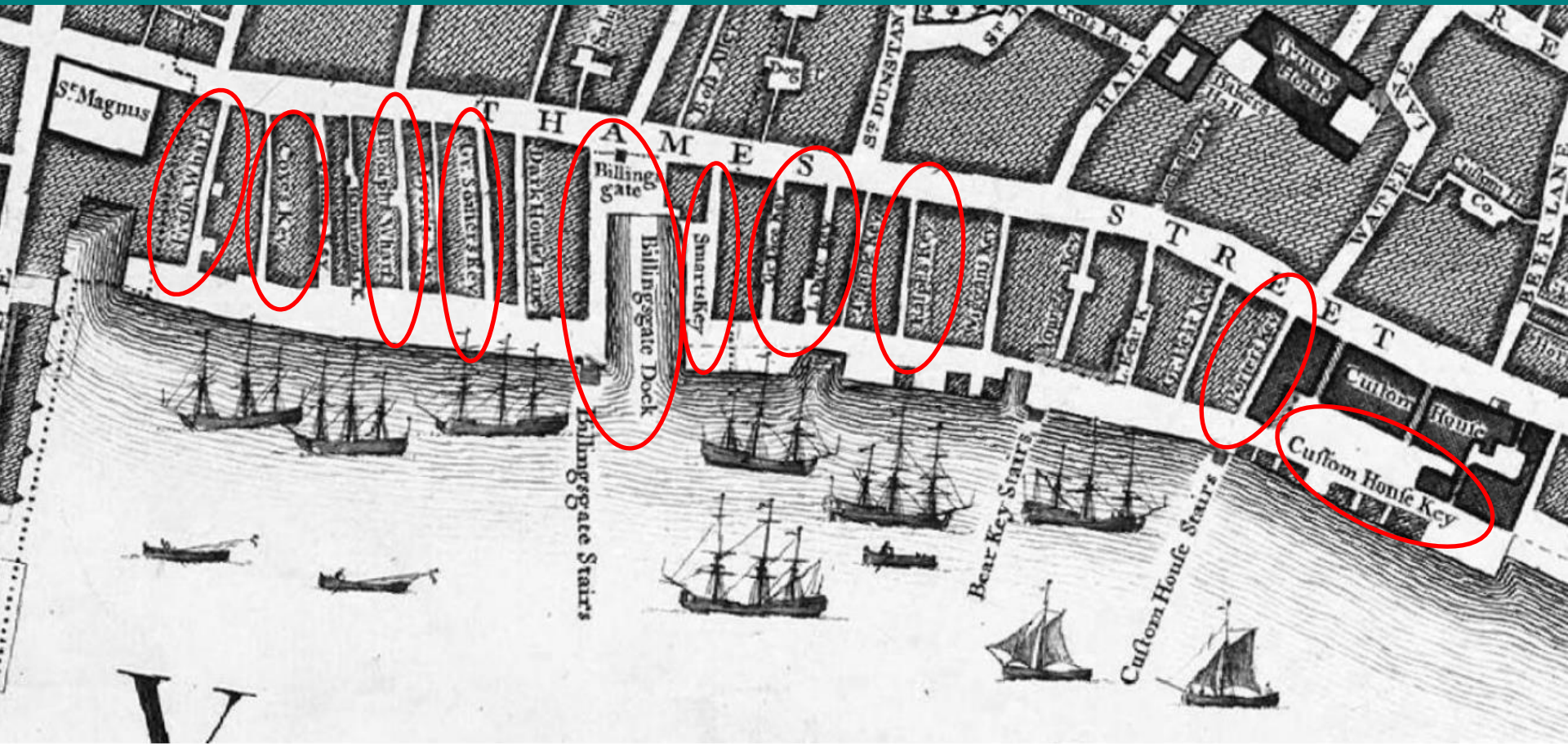
Private wharves, docks and keys

COMMERCIAL RIVER



Freshwharf to Custom House Key

COMMERCIAL RIVER

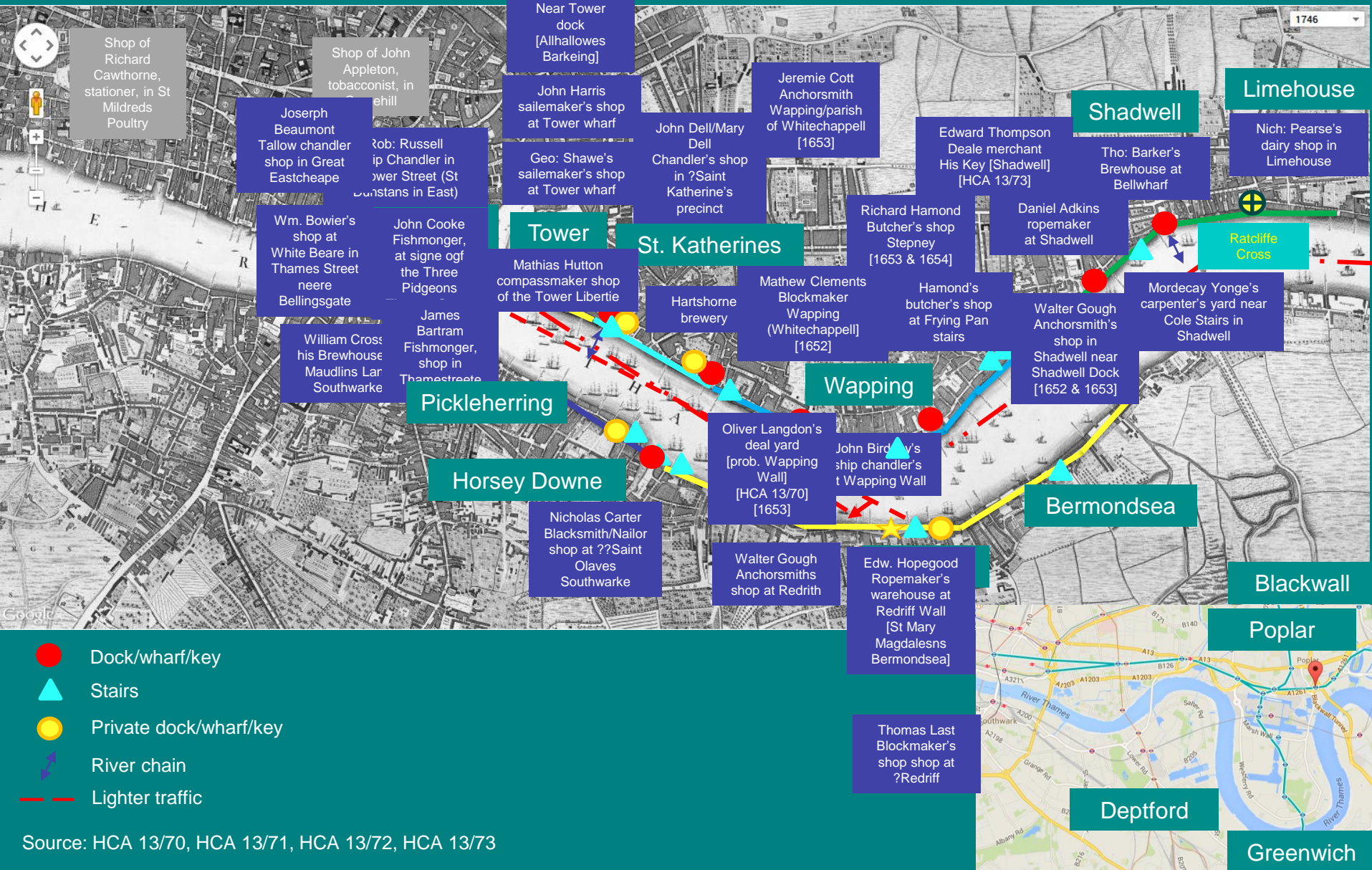


Wharf or key in HCA data

Marine suppliers

COMMERCIAL RIVER

Mr Graves
shipwright
Dock near
Limehouse



Source: HCA 13/70, HCA 13/71, HCA 13/72, HCA 13/73

Supplier schedules

Hopwood Bowyer and others against Hopkins
Sentence given June 30th 1657

First schedule:
rope maker

Second schedule:
tarr supplier

Third schedule:
tallow chandler

Fourth schedule:
sail maker

Fifth schedule:
fishmonger

Sixth schedule:
mast maker

Seventh schedule:
compass maker

Eighth schedule:
chandler

Inns, taverns, victualling houses

COMMERCIAL RIVER



Inns, taverns, victualling houses

COMMERCIAL RIVER

