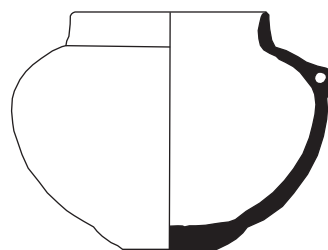


# Uruk, Jemdet Nasr, Early Dynastic, and Akkadian period Pottery from Nippur in the Royal Ontario Museum collection

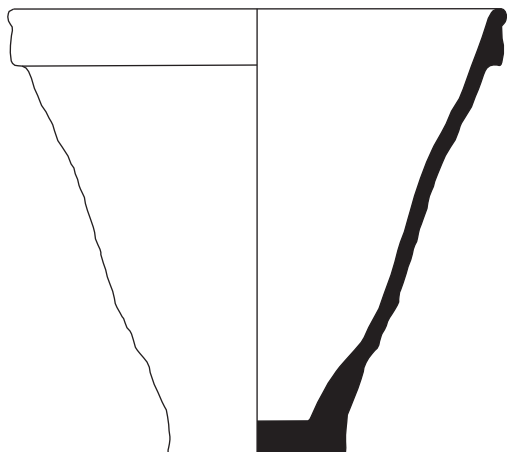
Arthur Stefanski, PhD candidate  
Department of Near and Middle Eastern Civilizations  
University of Toronto



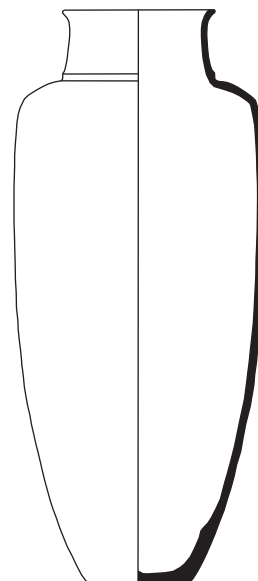
962.143.110



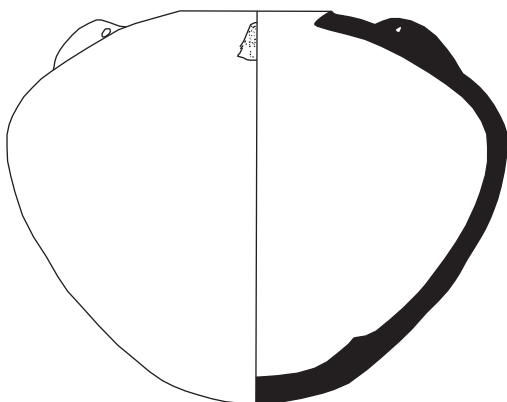
962.143.107



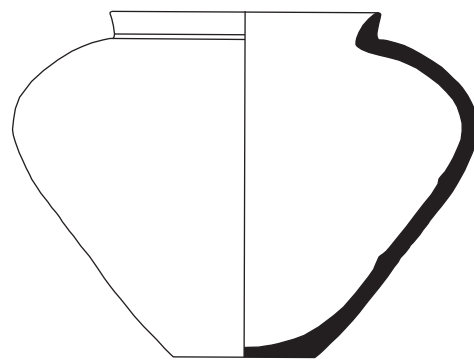
962.143.102



962.143.106

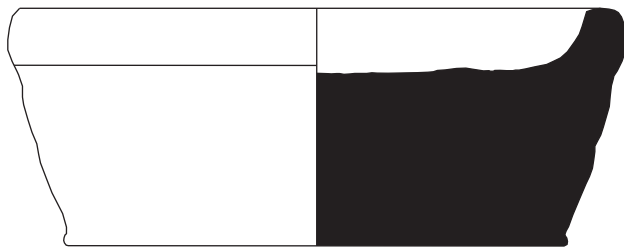


962.143.108

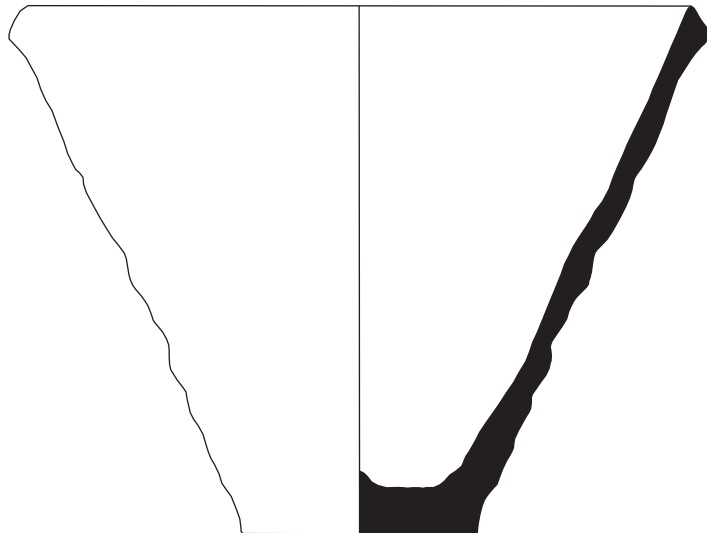


962.143.105

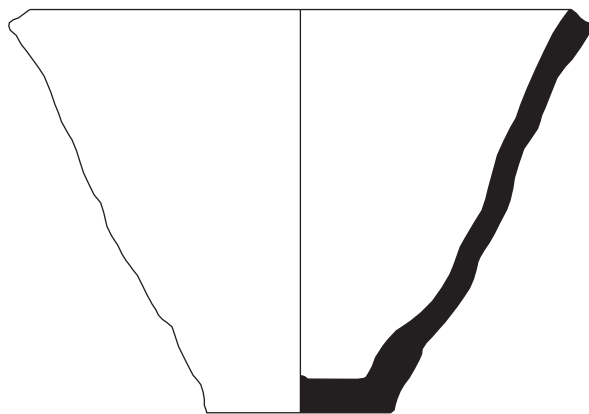
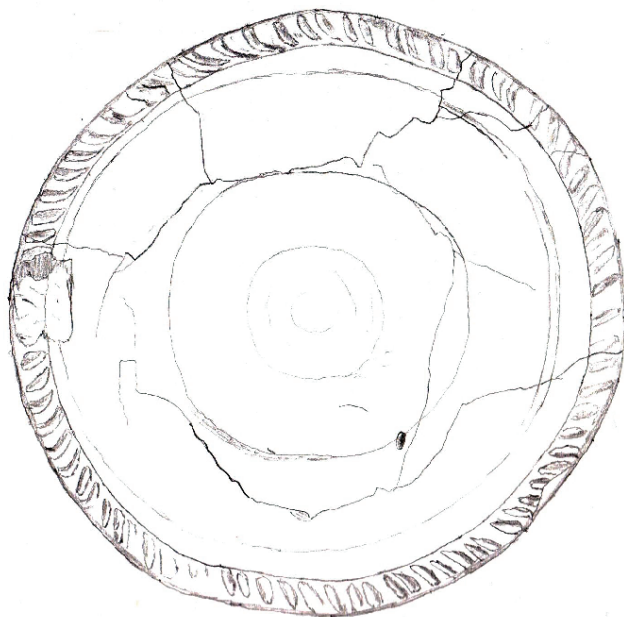
<i>ROM accession num</i>	<i>site</i>	<i>provenance</i>	<i>period</i>	<i>provenance citation</i>	<i>object type</i>	<i>manufacture</i>	<i>decoration</i>	<i>colour description</i>	<i>rim diameter (cm)</i>	<i>base</i>	<i>museum description card</i>
962.143.110	Nippur	Inanna Temple General Level XX Field No. 7N820	Uruk	Hansen and Dales 1962: 76	conical bowl	earthenware		yellowish	45		central vertical partition; very large and heavy; hand modelled, crude work, surface rough, straight flaring sides, rim slightly thickened, flat on top. Partition stops about 1cm below rim.
962.143.107	Nippur	Inanna Temple General Level XV-XVI Field No. 7N778	Uruk	Hansen and Dales 1962: 76	handled jar	earthenware	combed bands on shoulder	buff	9.5	string cut	small flat base, globular body, and a simple vertical collar rim. Trace of handle on one shoulder fragment.
962.143.102	Nippur	Inanna Temple 336 Level XIX Field No. 7N747	Uruk	Hansen and Dales 1962: 76	vase	earthenware		buff ext/pinkish clay	26.5	string cut	large; straight flaring sides; extruded rim; crudely made, coarse ware, surface washed but unsmoothed; four finger impressions near base made by potter when the vessel was removed from the wheel.
962.143.106	Nippur	Inanna Temple 351 Level XV B Field No. 7N770	Uruk	Hansen and Dales 1962: 76	jar	earthenware		buff	8.1	string cut	cylindrical body tapering toward bottom which is slightly convex. Sharp shoulder, vertical collar rim with edge slightly everted. Plain, buff ware
962.143.108	Nippur	Inanna Temple 356 Level XVI Field No. 7N781	Uruk	Hansen and Dales 1962: 76	4 lugged jar	earthenware		buff	4	rounded	carinated body, rounded bottom, 4 pierced lugs on shoulder; buff clay, undecorated.
962.143.105	Nippur	Inanna Temple 351 Level XV Field No. 7N767	Uruk	Hansen and Dales 1962: 76	jar	earthenware		buff	14.3	string cut	carinated body, thin flaring rim. Undecorated buff ware. Roughly smoothed inside. Traces of bitumen on broken bottom edge suggesting ancient repair.



962.143.103



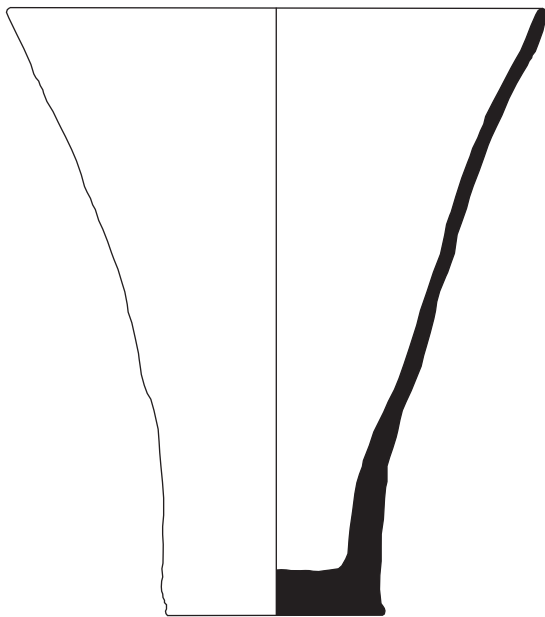
962.143.101



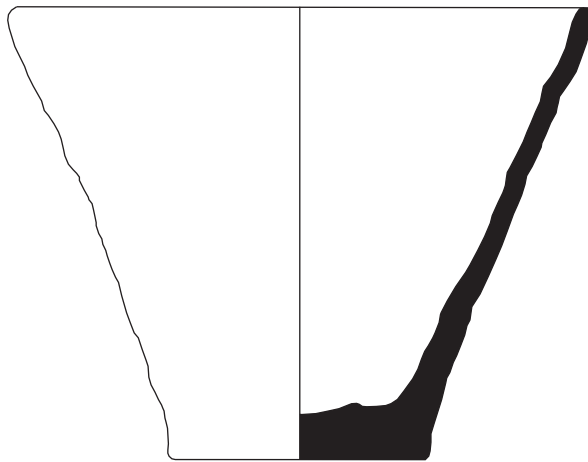
962.143.104



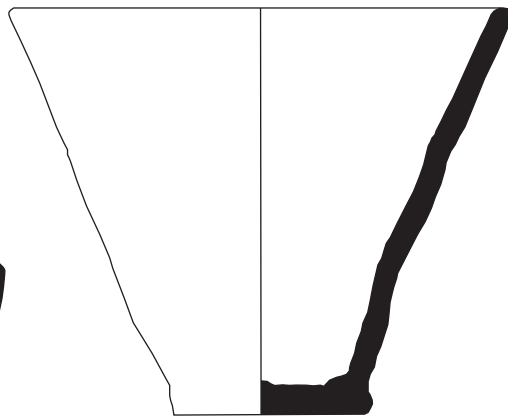
ROM accession num	site	provenance	period	provenance citation	object type	manufacture	decoration	colour description	rim diameter (cm)	base	museum description card
962.143.103	Nippur	Inanna Temple 342 Level XIV Field No. 7N749	Jemdet Nasr	Hansen and Dales 1962: 76	pot stand	earthenware	incised rope decoration	coarse yellowish clay with thick buff wash	16.5	string cut	clay pot stand or dish; thick disk shaped base; small verticle rim with incised rope decoration; crudely made.
962.143.101	Nippur	Inanna Temple 333 Level XIII Field No. 7N742	Jemdet Nasr	Hansen and Dales 1962: 76	bowl	earthenware		reddish brown with white wash inside and out	17.2	string cut	straight flaring sides, bevelled rim.
962.143.104	Nippur	Inanna Temple 336 Level XIV Field No. 7N759	Jemdet Nasr	Hansen and Dales 1962: 76	conical bowl	earthenware		buff/light pinkish clay	15.5	string cut	flaring sides and bevelled rim; surfaces washed but irregular on the outside.



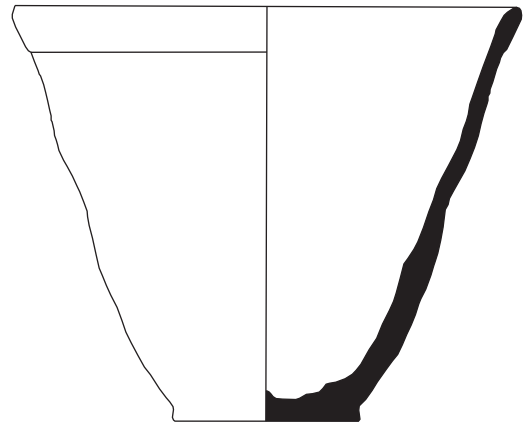
962.143.83



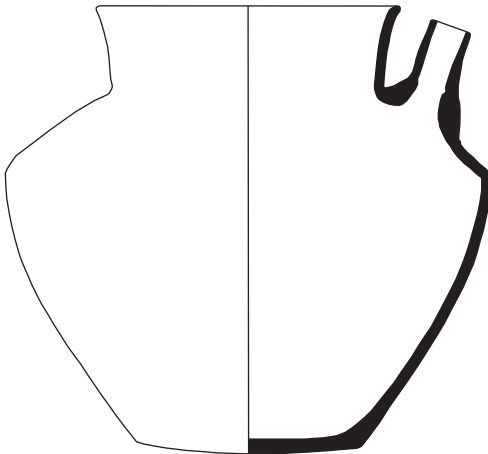
962.143.81



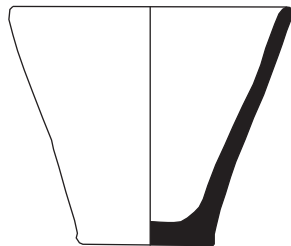
962.143.78



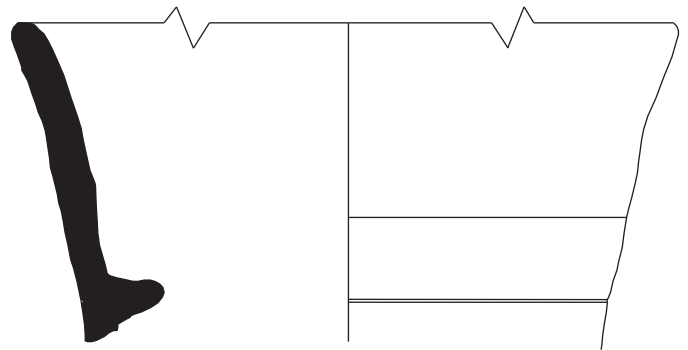
962.143.82



962.143.76



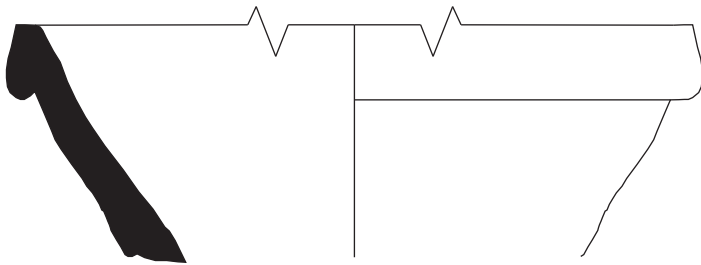
962.143.77



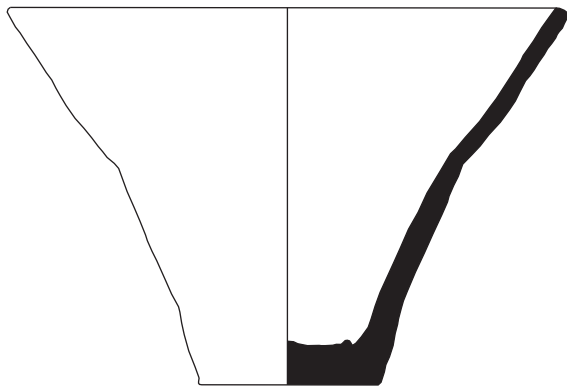
962.143.84



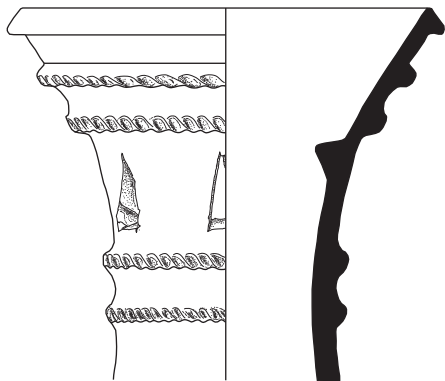
<i>ROM accession num</i>	<i>site</i>	<i>provenance</i>	<i>period</i>	<i>provenance citation</i>	<i>object type</i>	<i>manufacture</i>	<i>decoration</i>	<i>colour description</i>	<i>rim diameter (cm)</i>	<i>base</i>	<i>museum description card</i>
962.143.83	Nippur	Inanna Temple 258 level IX B Field No. 7N603	ED1	Hansen and Dales 1962: 76	cup	earthenware		pinkish buff	16	string cut	slightly flaring sides, plain rim.
962.143.76	Nippur	Inanna Temple 246 level IX A Field No. 7N557	ED1	Hansen and Dales 1962: 76	spouted jar	earthenware		buff	16.1	slightly convex	carinated body, vertical collar rim, straight spout rising vertically from shoulder. Inside roughly smoothed.
962.143.81	Nippur	Inanna Temple 284 Level X Field No. 7N591	ED1	Hansen and Dales 1962: 76	conical bowl	earthenware		buff/yellowish clay	15.5	string cut	washed surface; straight flaring sides, plain rim.
962.143.78	Nippur	Inanna Temple 239 Level IX A Field No. 7N564	ED1	Hansen and Dales 1962: 76	conical bowl	earthenware		buff/cream	13.5	string cut	straight flaring sides, plain rim; slow wheel made, crude.
962.143.77	Nippur	Inanna Temple 283 Level IX Field No. 7N560	ED1	Hansen and Dales 1962: 76	cup	earthenware		buff/pinkish buff (partly oxidized)	7.5	string cut	straight flaring sides, plain rim, wheel made. Originally contained grain, traces of which adhere to the inside surface.
962.143.82	Nippur	Inanna Temple 279 Level X Field No. 7N598	ED1	Hansen and Dales 1962: 76	conical bowl	earthenware		washed surface	13.6	string cut	straight flaring sides, plain rim.
962.143.84	Nippur	Inanna Temple 269 Level X Field No. 7N604	ED1	Hansen and Dales 1962: 76	pot stand fragments	earthenware	incised lines, thumbnail impressions	buff	25		originally a hollow cylinder with concave sides. At least one band of cut out triangular holes. On the inside, about 7cm below the top rim are clay lugs to support a pot.



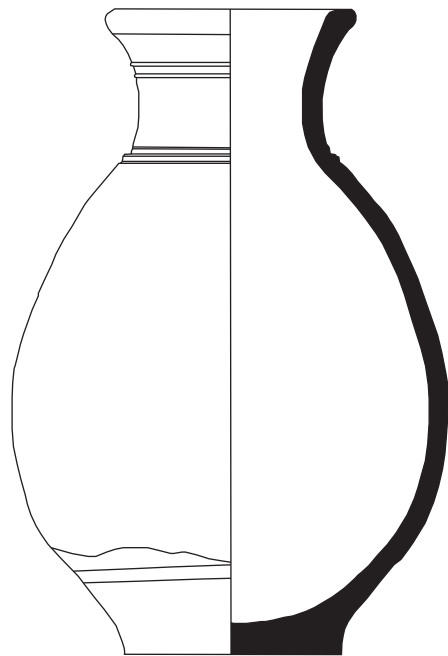
962.143.66



962.143.85



962.143.67



955.143.10



ROM accession num	site	provenance	period	provenance citation	object type	manufacture	decoration	colour description	rim diameter (cm)	base	museum description card
962.143.66	Nippur	Inanna Temple 230 - Level VIII, Field No. 7N514	ED2	Hansen and Dales 1962: 76	stand fragment	earthenware		buff	36		
962.143.85	Nippur	Inanna Temple 219 level VIII Field No. 7N607 D	ED2	Hansen and Dales 1962: 76	conical bowl	earthenware		light buff to reddish	15	string cut	straight flaring sides, plain rim; washed surface.
962.143.67	Nippur	Inanna Temple VII tearing down East wall. Field No. 7N517	ED2	Hansen and Dales 1962: 76	fenestrated stand fragments	earthenware	applied rope designs and cut out triangular bands	buff/cream; pale reddish clay	23.6		16 pieces, mostly from top half.
955.143.10	Nippur	Locus NT31 level II-1 4B118	ED3/Akkadian	OIP97 Plate 34	pot	earthenware	incised lines	buff	6.4	flat	vase shaped, short neck with everted rim.

## **Acknowledgements**

This project was completed with the assistance of Dr. Clemens Reichel, my PhD supervisor and Associate Curator at the Royal Ontario Museum, Cheryl Copson, Collection Technician for the Egypt and West Asia collection at the Royal Ontario Museum, and Bill Pratt, former Collection Technician for the Egypt and West Asia collection at the Royal Ontario Museum.

## **Bibliography**

Hansen, D.P., and Dales, G.F.

1962 The Temple of Inanna Queen of Heaven at Nippur. *Archaeology* 15(2): 75-84.

McCown, D.E., Haines, R.C., Biggs, R.D., and Carter, E.F.

1978 *Nippur II. The North Temple and Sounding E: Excavations of the Joint Expedition to Nippur of the American Schools of Oriental Research and the Oriental Institute of the University of Chicago*. Oriental Institute Publications 97, Chicago: University of Chicago Press.